



GUILDFORD
BOROUGH

James Whiteman
Managing Director

www.guildford.gov.uk

Dear Councillor

PLANNING COMMITTEE - WEDNESDAY 19TH AUGUST 2020

Please find attached the following:

Presentations

Yours sincerely

Sophie Butcher, Democratic Services Officer
01483 444056

Encs

This page is intentionally left blank

19/P/01003 and 20/P/01011

**Land to the north of
Heath Drive
Send
GU23 7EP**

[Previous](#)

[Next](#)

[Home](#)



Location plan

[Previous](#)

[Next](#)

[Home](#)



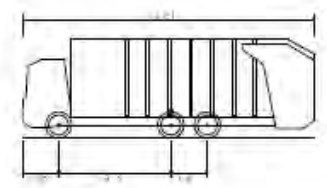


Scale perimeter plan proposed

[Previous](#)

[Next](#)

[Home](#)



- Devision Large Refuse Vehicle
- Overall Length
- Overall Width
- Overall Body Height
- Min. Body Ground Clearance
- Track Width
- Lock to Lock Time
- Well to Well Turning Radius



Application Boundary

Aerial illustrative masterplan

[Previous](#)

[Next](#)

[Home](#)



Aerial illustrative masterplan

[Previous](#)

[Next](#)

[Home](#)



Photos

Previous

Next

Home





Within the site

Previous

Next

Home

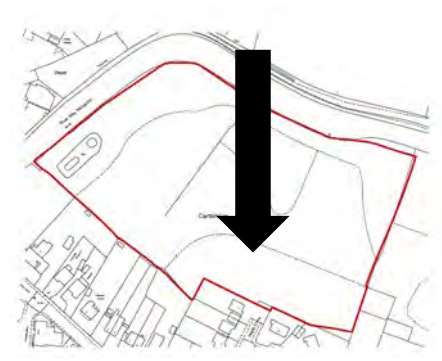


More open elements within the site

[Previous](#)

[Next](#)

[Home](#)





View from site back along Heath Drive

[Previous](#)

[Next](#)

[Home](#)



View from Tow path

[Previous](#)

[Next](#)

[Home](#)



22/0



22/07/2020



View from Tow path

[Previous](#)

[Next](#)

[Home](#)



15 Houses

14 Apartments

[Previous](#)

[Next](#)

[Home](#)

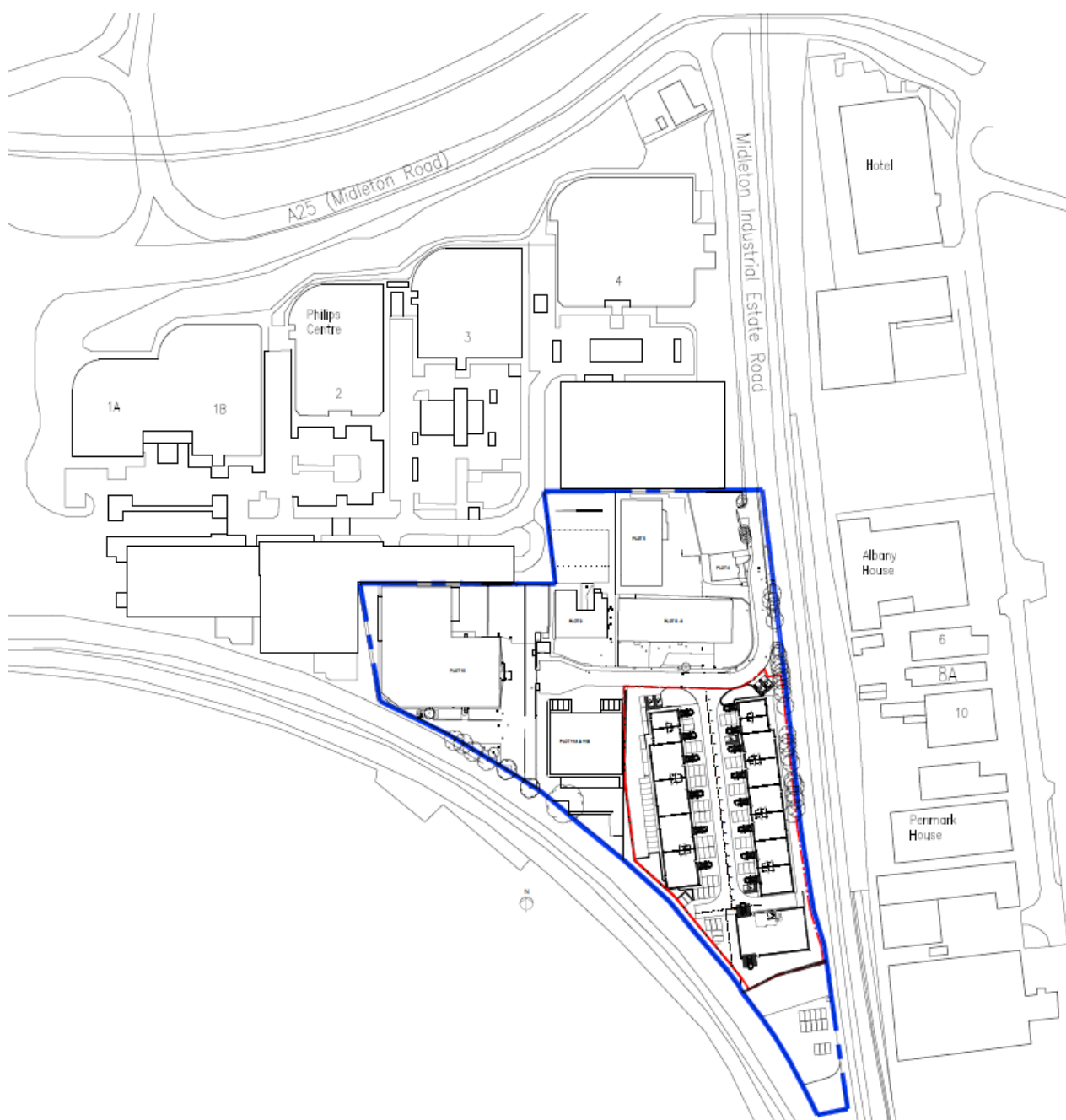
19/P/02195

**12/15 Midleton Industrial Estate Road
Guildford
GU2 8XW**

[Previous](#)

[Next](#)

[Home](#)

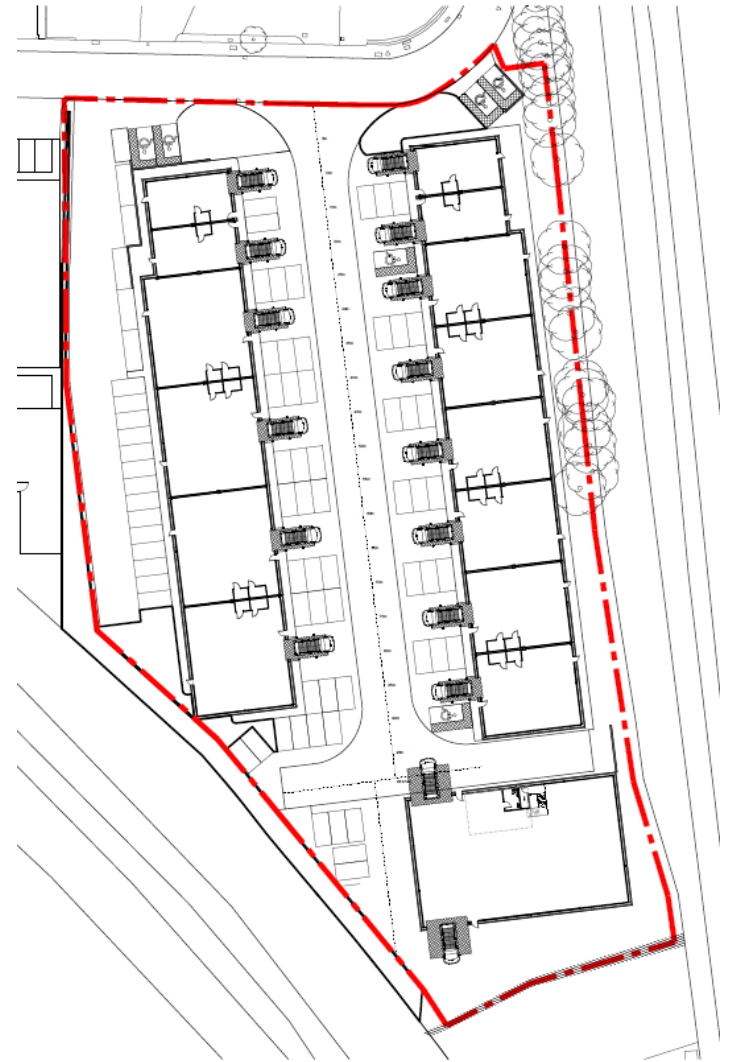


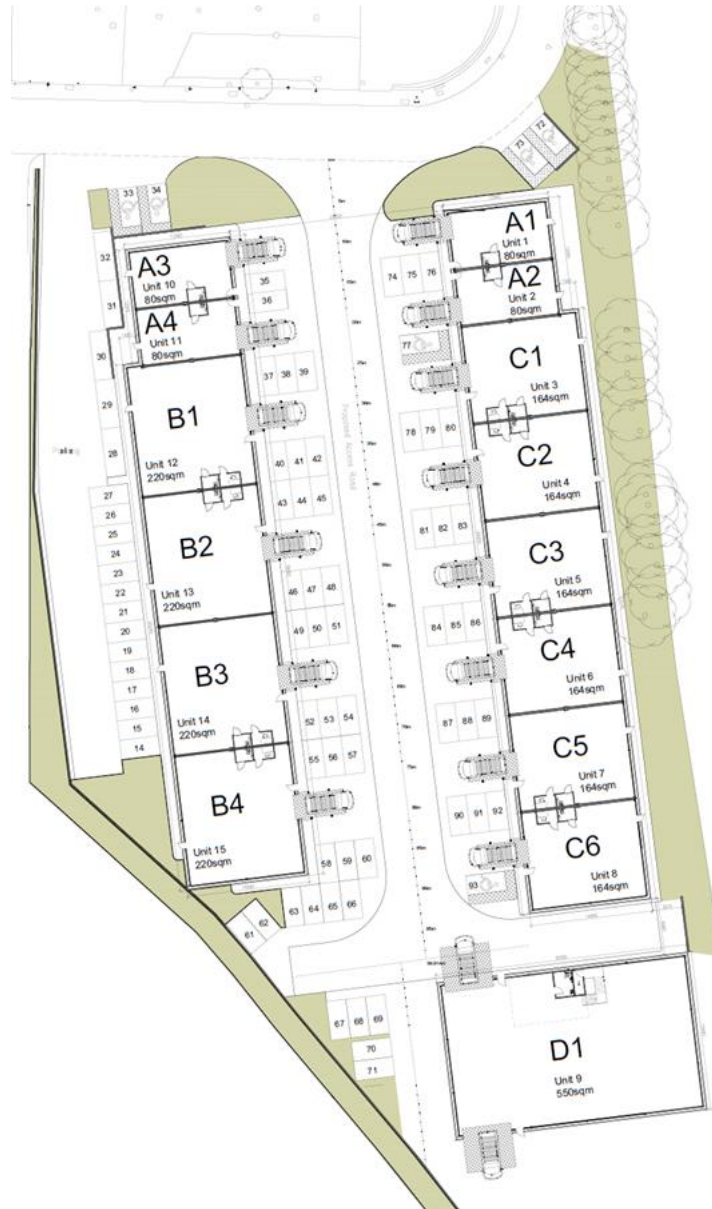
Site Location Plan

[Previous](#)

[Next](#)

[Home](#)



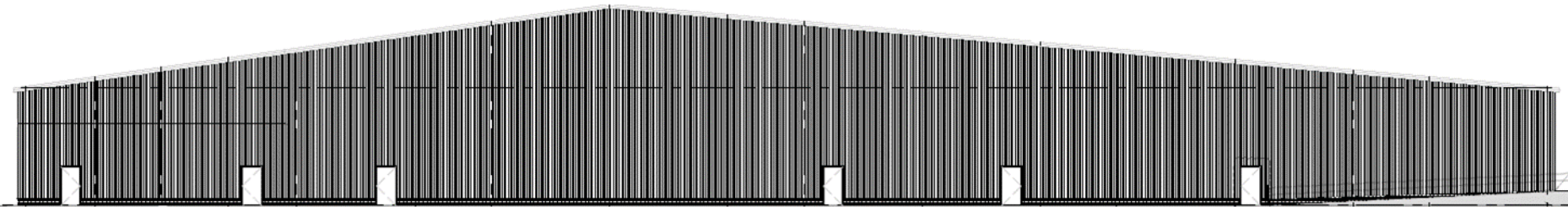
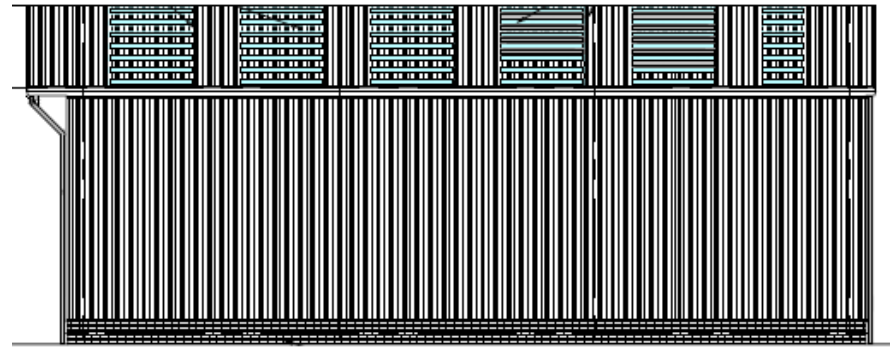
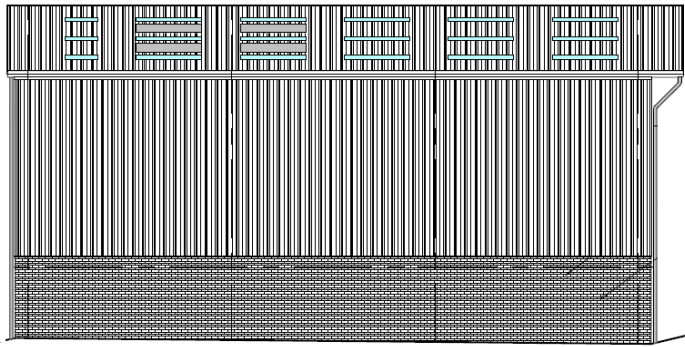
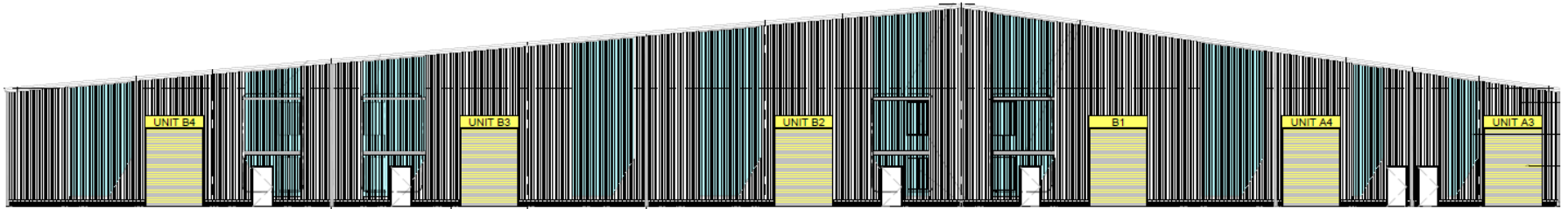


Proposed layout

[Previous](#)

[Next](#)

[Home](#)

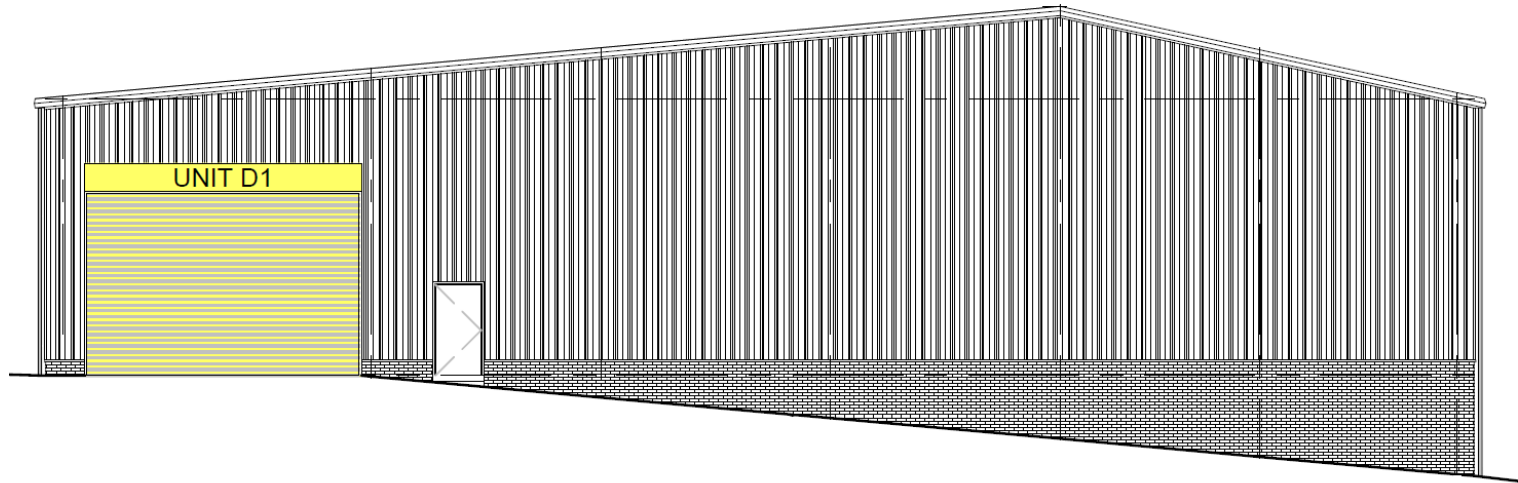
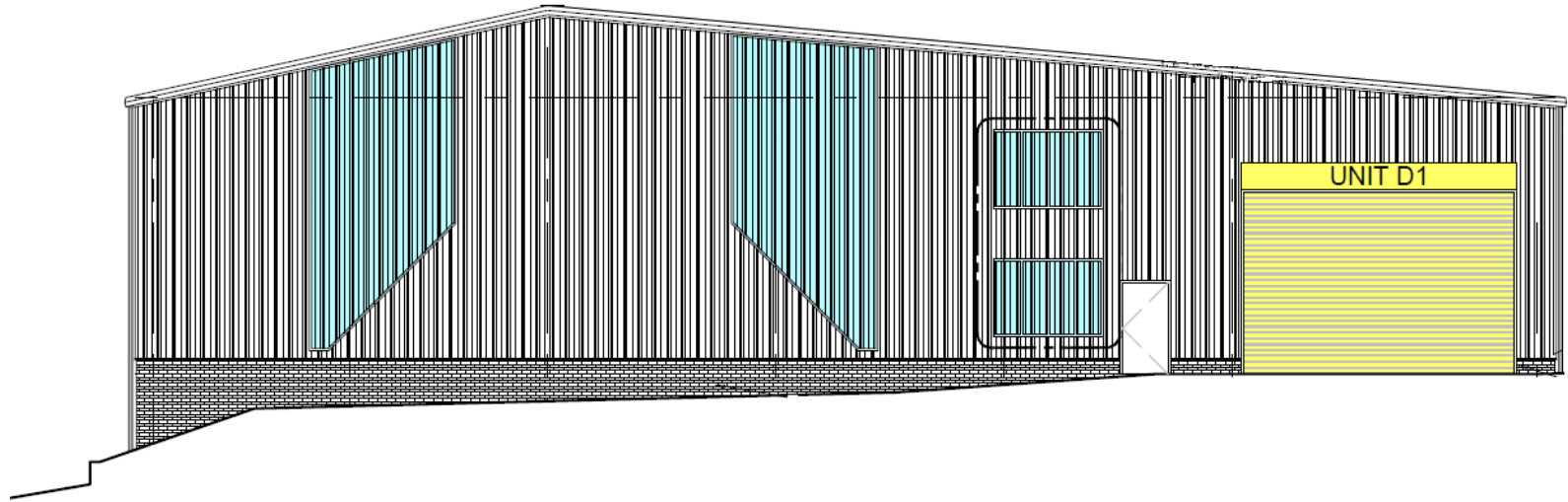


Proposed Elevations of Units A3-B4

[Previous](#)

[Next](#)

[Home](#)

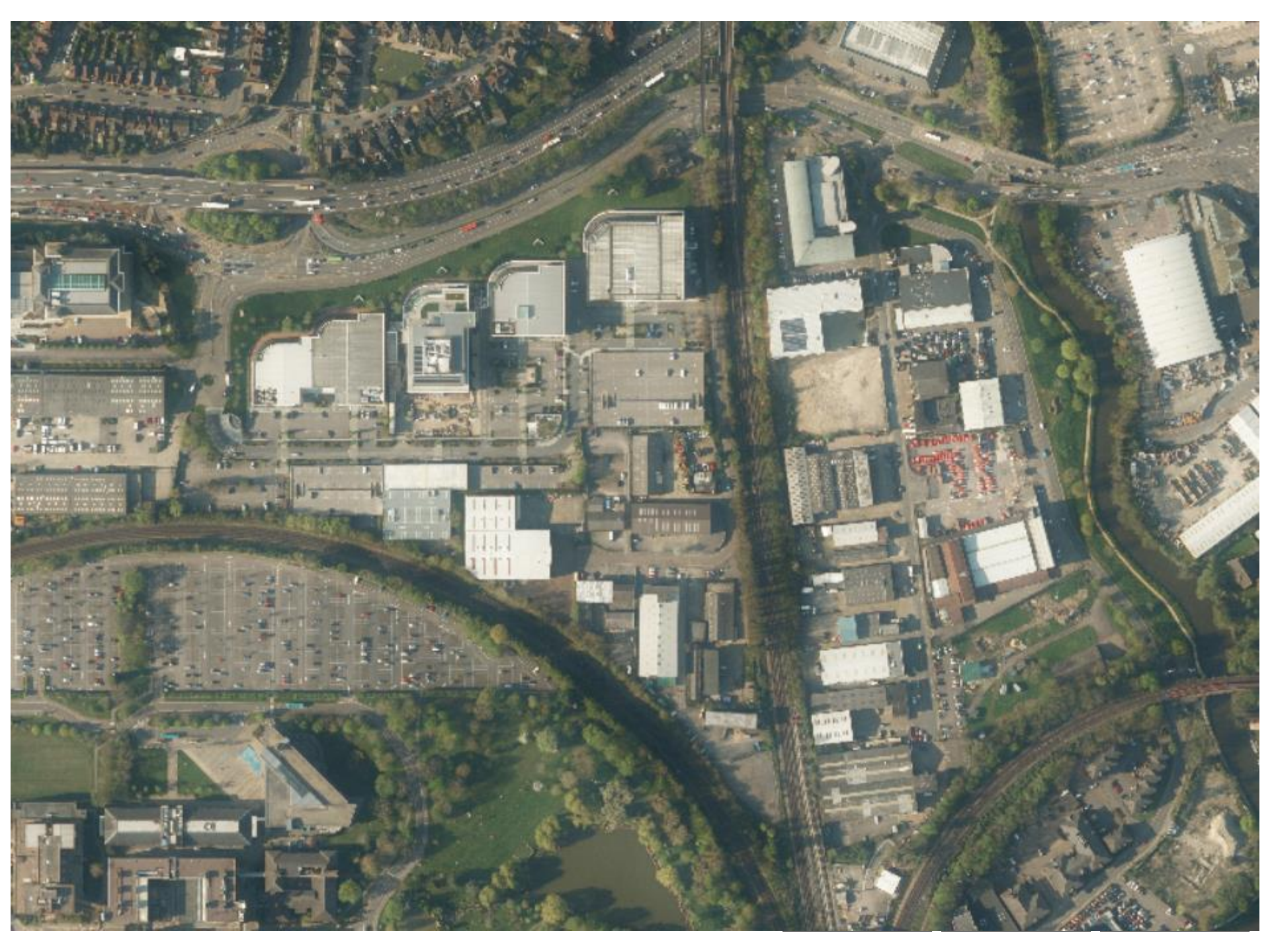


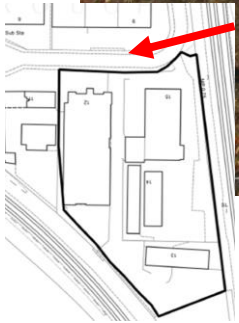
Proposed Elevations of Unit D1

[Previous](#)

[Next](#)

[Home](#)





[Previous](#)

[Next](#)

[Home](#)



[Previous](#)

[Next](#)

[Home](#)



[Previous](#)

[Next](#)

[Home](#)

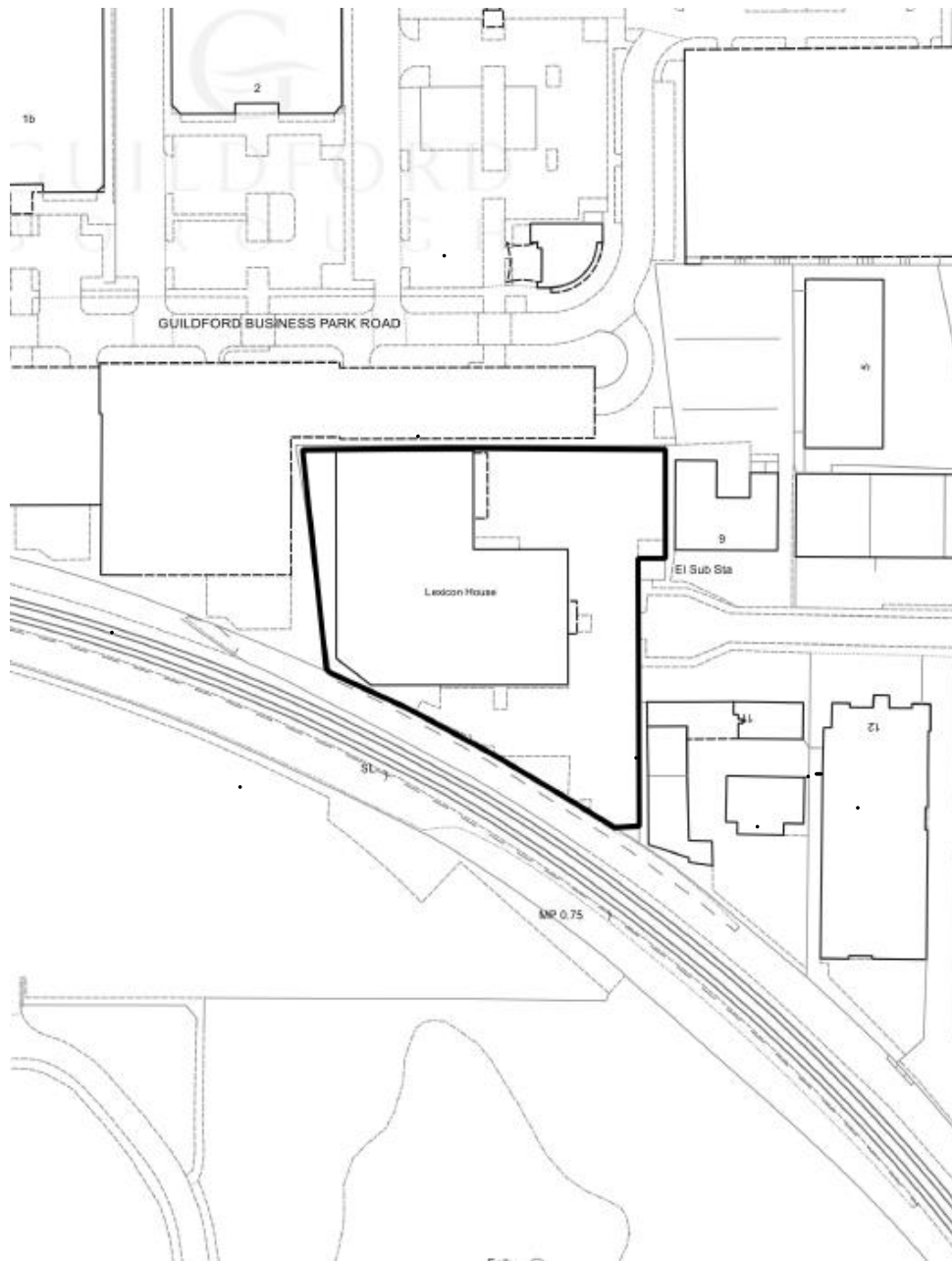
20/P/00141

**Lexicon House,
10 Midleton Industrial Estate Road
Guildford
GU2 8XW**

[Previous](#)

[Next](#)

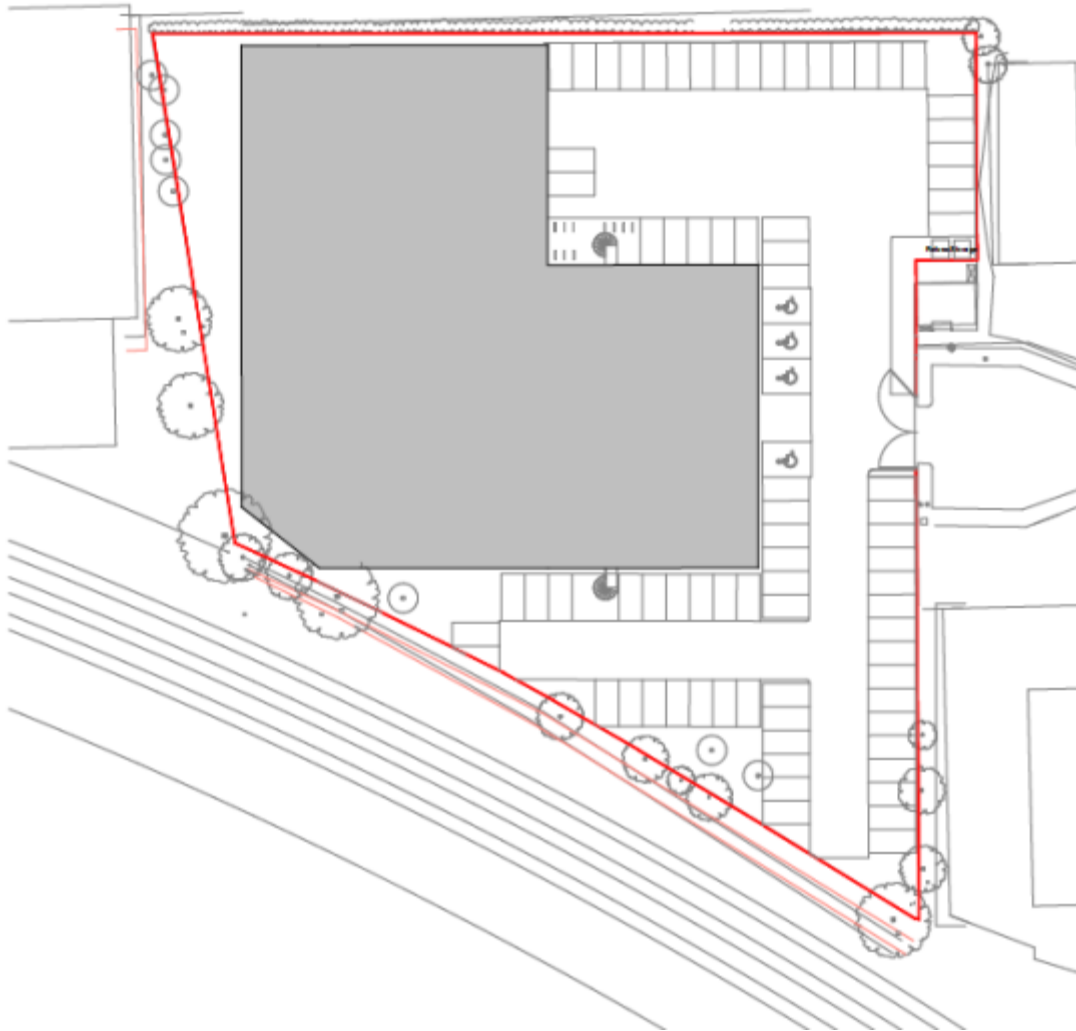
[Home](#)



[Previous](#)

[Next](#)

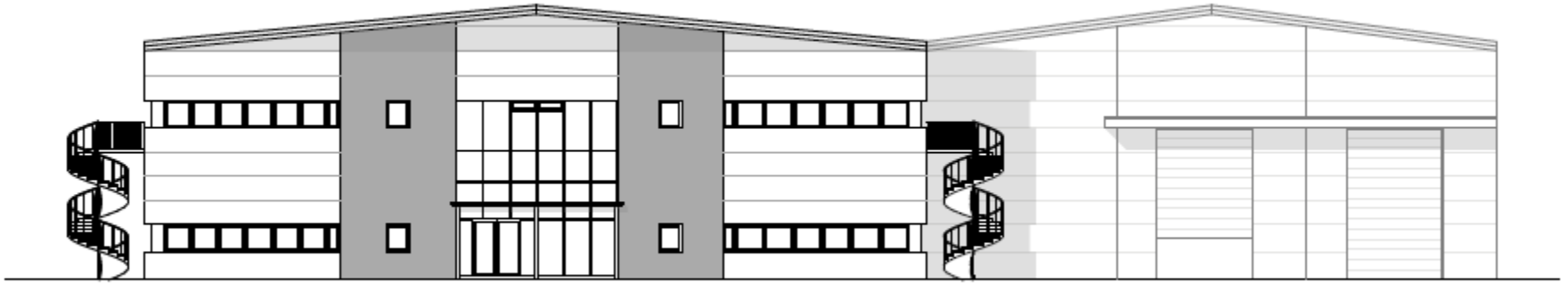
[Home](#)



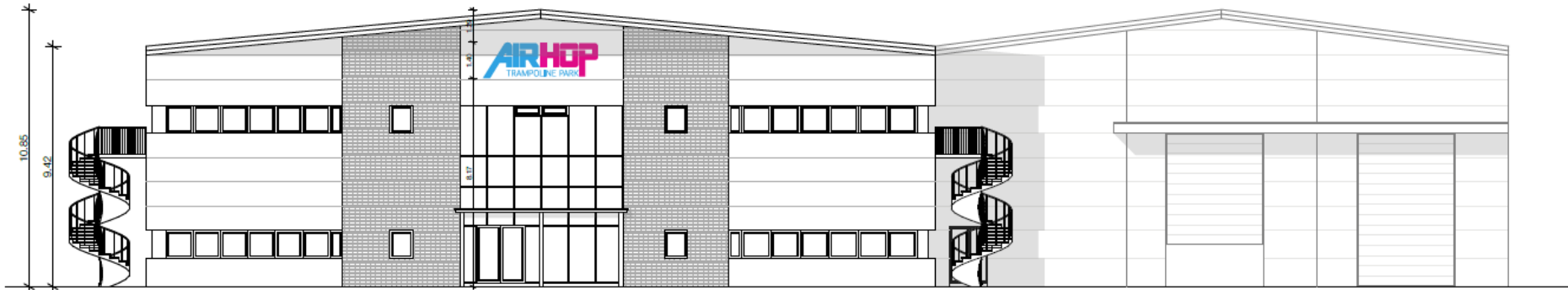
[Previous](#)

[Next](#)

[Home](#)



Front (East) Elevation

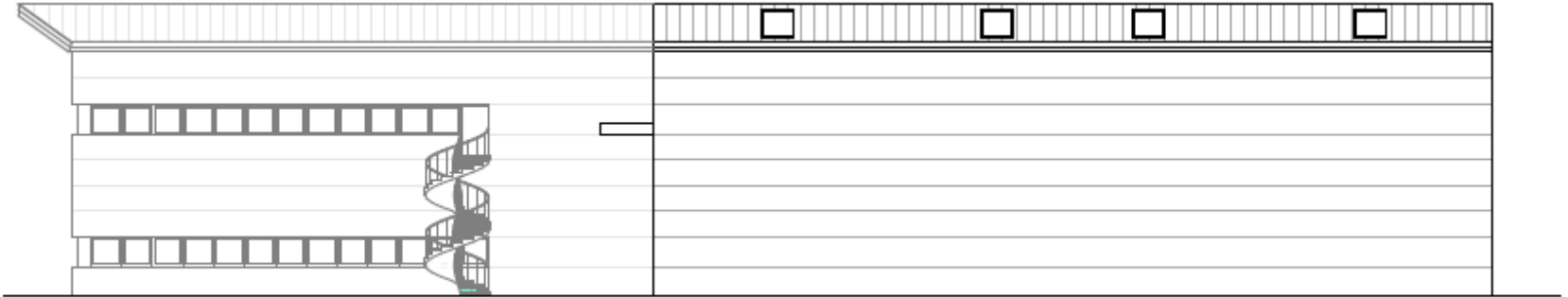


Front (East) Elevation

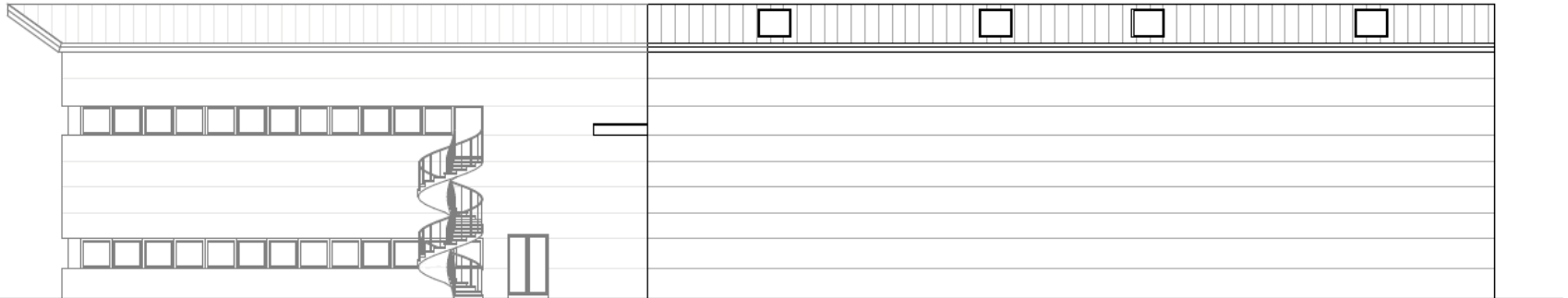
[Previous](#)

[Next](#)

[Home](#)



Side (North) Elevation

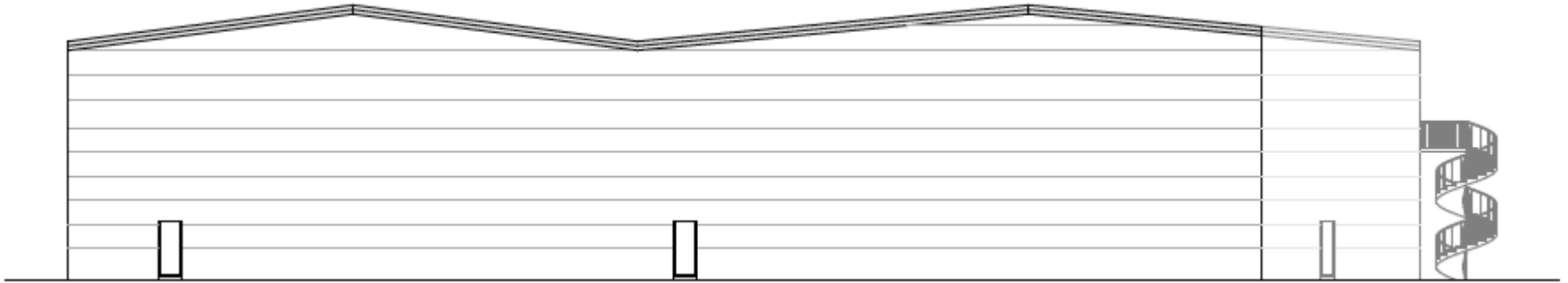


Side (North) Elevation

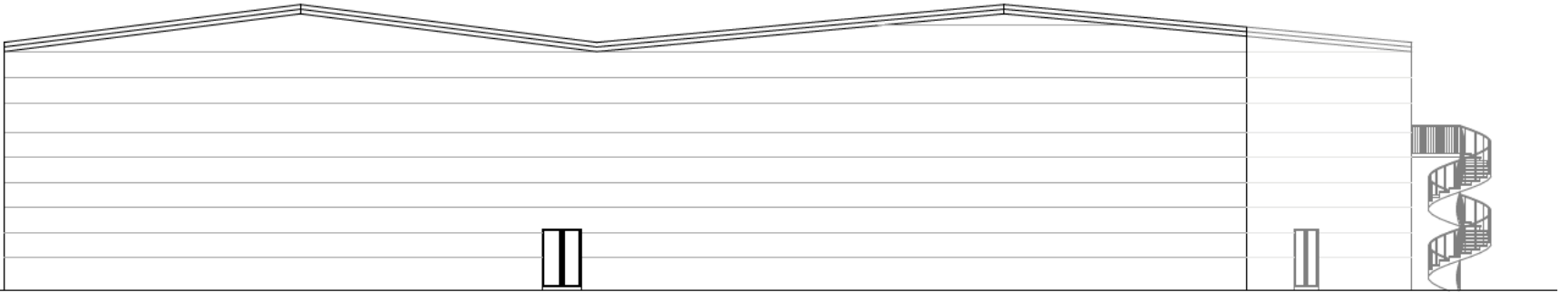
[Previous](#)

[Next](#)

[Home](#)



Rear (West) Elevation

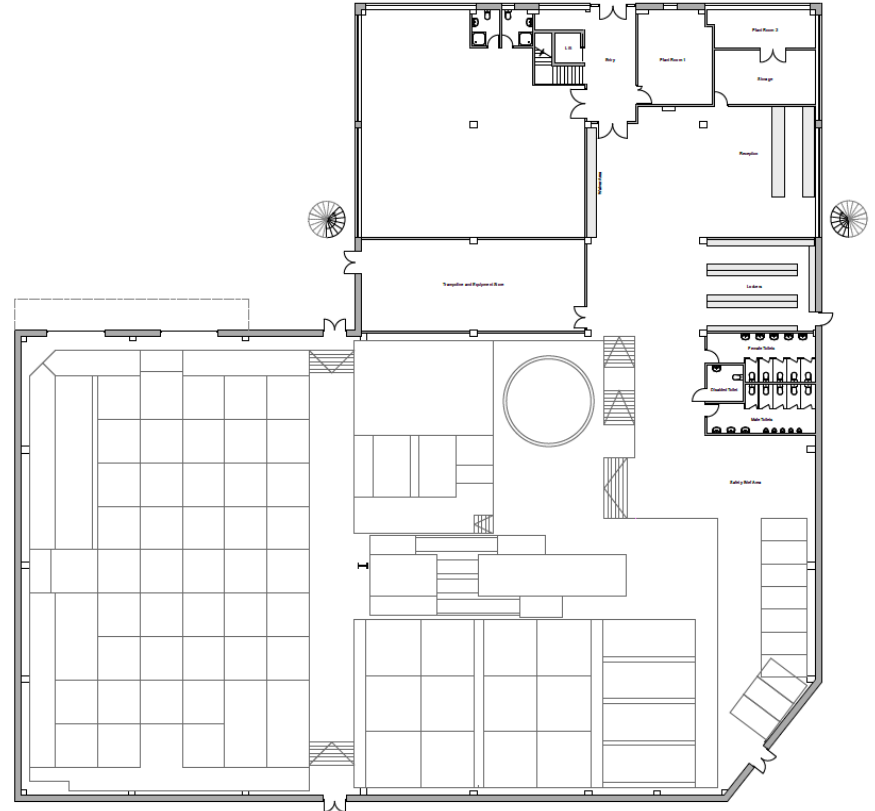


Rear (West) Elevation

[Previous](#)

[Next](#)

[Home](#)

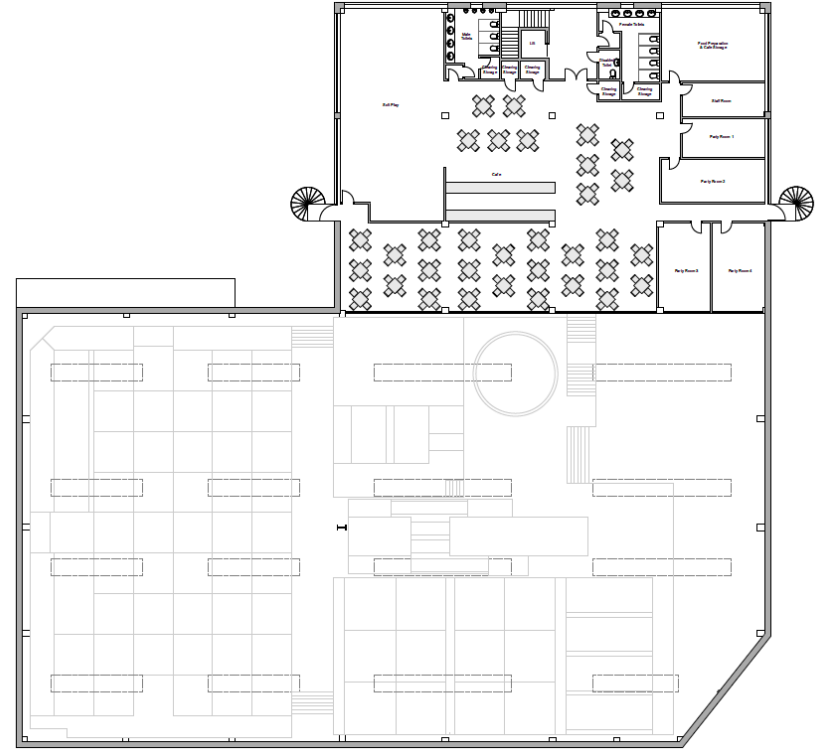
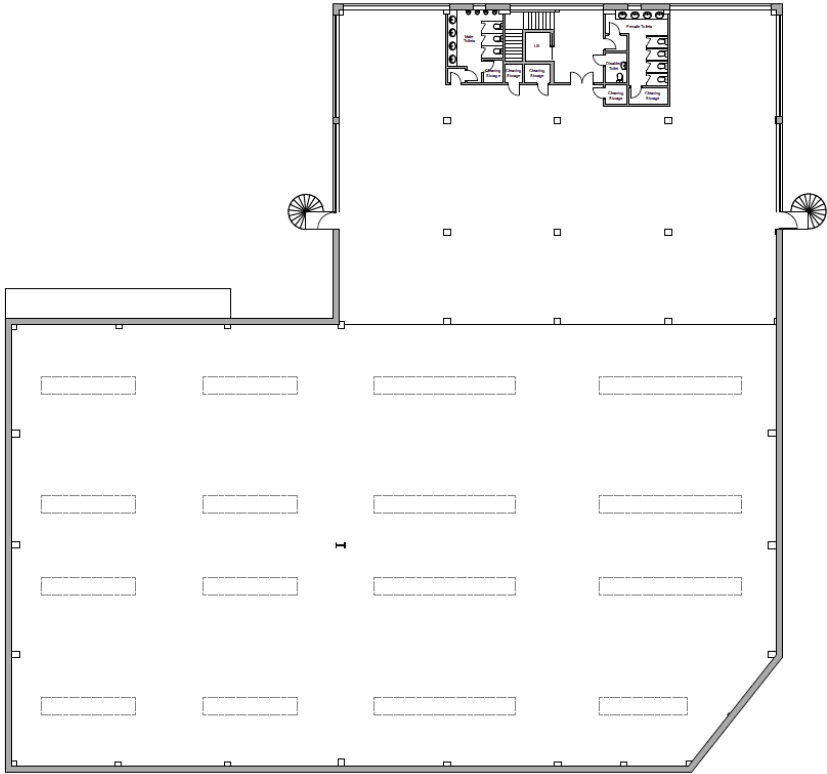


Existing and Proposed Ground Floor Layout

[Previous](#)

[Next](#)

[Home](#)



Existing and Proposed First Floor Layout

[Previous](#)

[Next](#)

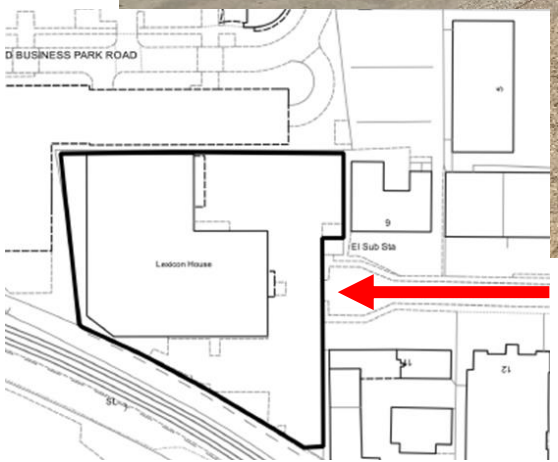
[Home](#)



[Previous](#)

[Next](#)

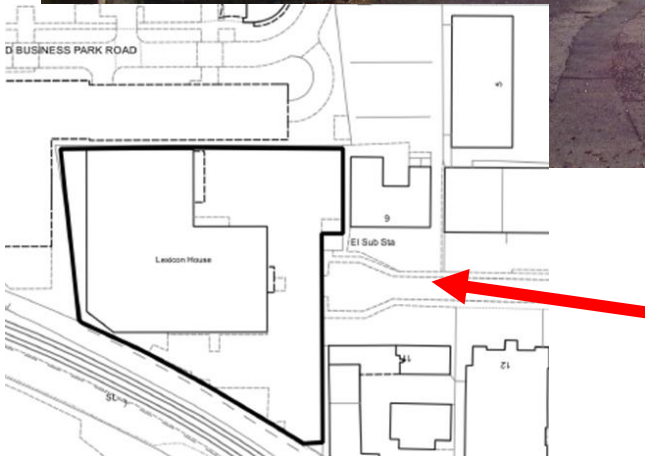
[Home](#)



[Previous](#)

[Next](#)

[Home](#)



[Previous](#)

[Next](#)

[Home](#)

[Previous](#)

[Next](#)

[Home](#)

20/P/00353

**244 London Road
Guildford**

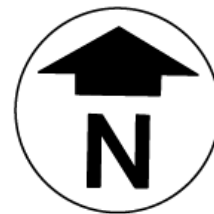
[Previous](#)

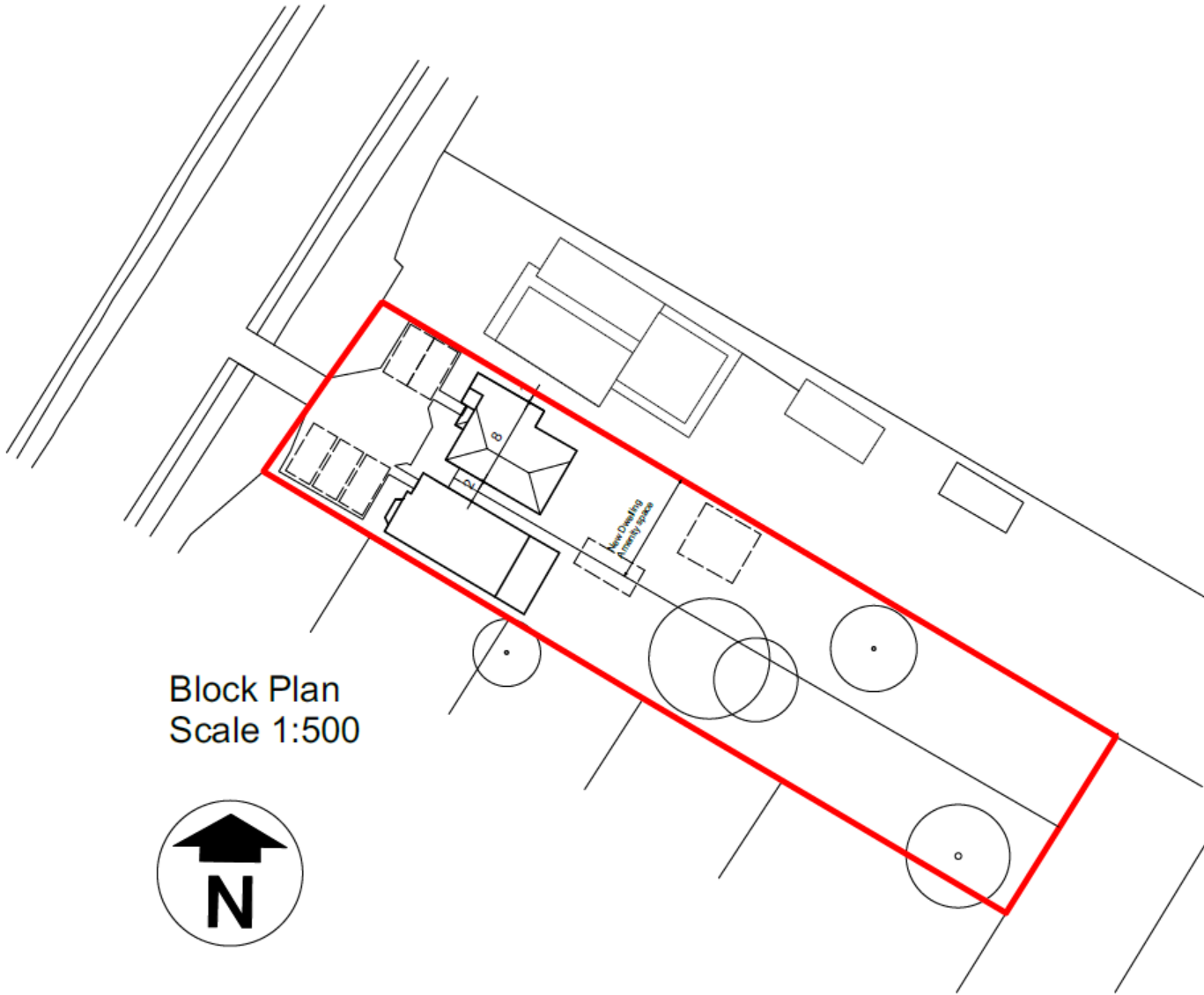
[Next](#)

[Home](#)



Location Plan
Scale 1:1250



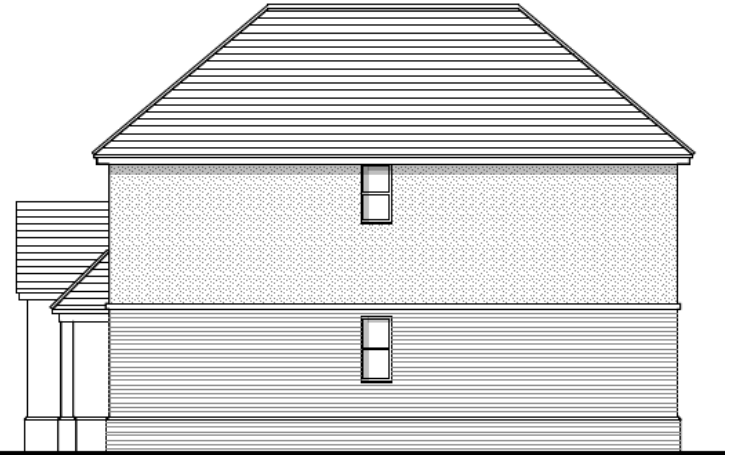


Block Plan
Scale 1:500





Front Elevation - West



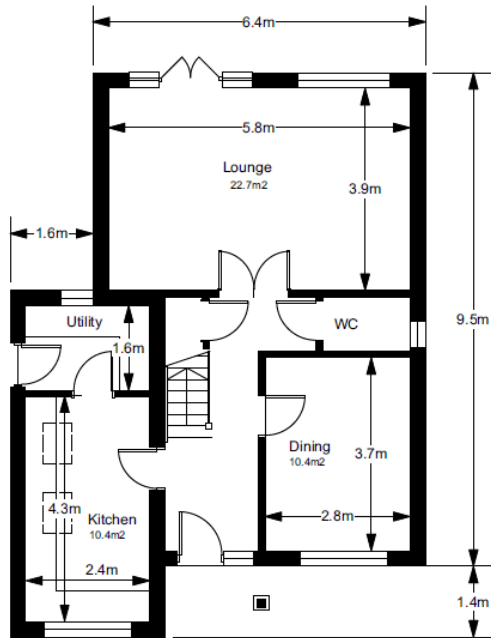
Side Elevation - South



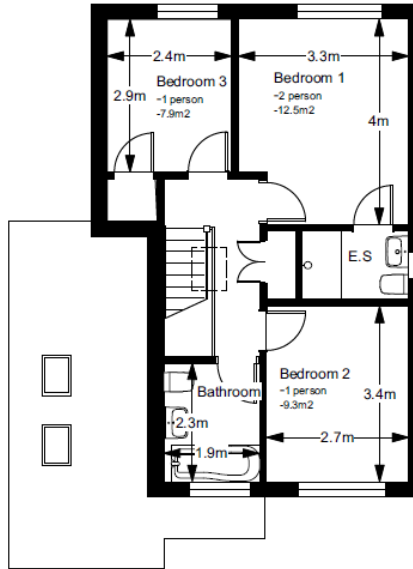
Side Elevation - North



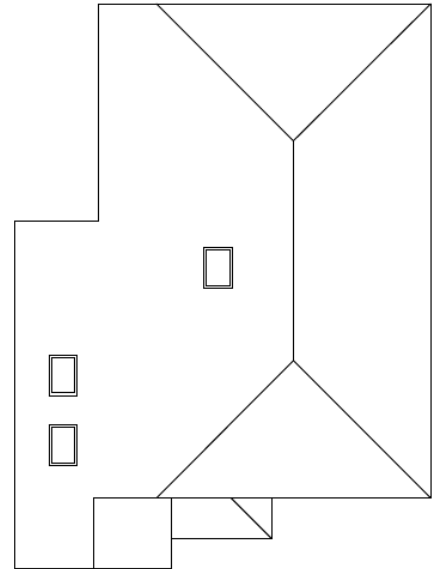
Rear Elevation - East



Proposed Ground floor Plan



Proposed First floor Plan



Proposed Roof Plan



246

Street Scene



Proposed Site



244

Proposed Street Scene

[Previous](#)

[Next](#)

[Home](#)



[Previous](#)

[Next](#)

[Home](#)



[Previous](#)

[Next](#)

[Home](#)



[Previous](#)

[Next](#)

[Home](#)



[Previous](#)

[Next](#)

[Home](#)



[Previous](#)

[Next](#)

[Home](#)



[Previous](#)

[Next](#)

[Home](#)

20/P/00746

**14A Tangier Road
Guildford**

[Previous](#)

[Next](#)

[Home](#)



Existing Block Plan



Proposed Block Plan

[Previous](#)

[Next](#)

[Home](#)



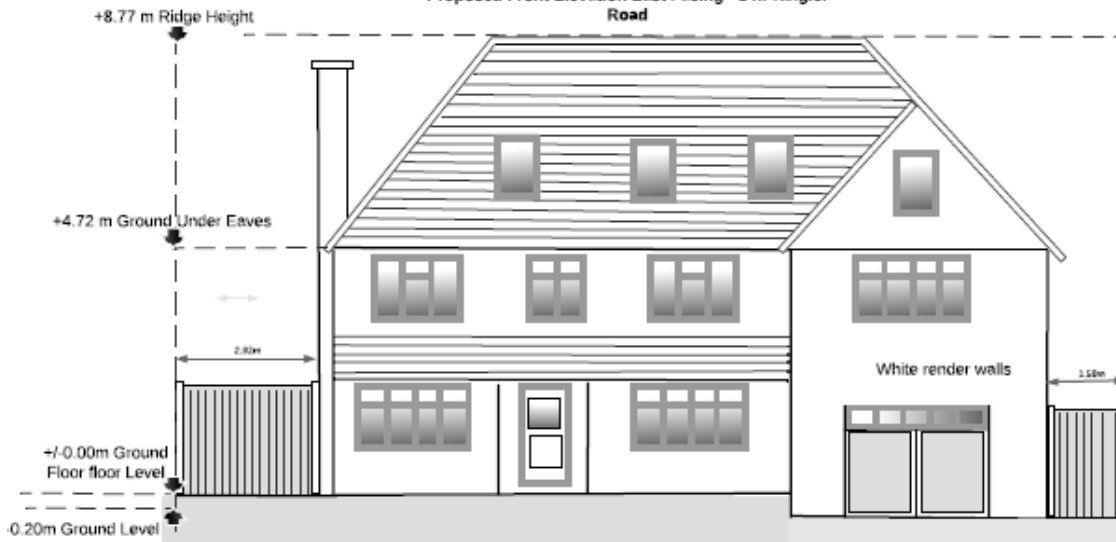
Existing front elevation

Approved Front Elevation East Facing - Ref
19/P/01039



Approved front elevation
Ref: 19/P/01039

Proposed Front Elevation East Facing - 14a Tangier
Road

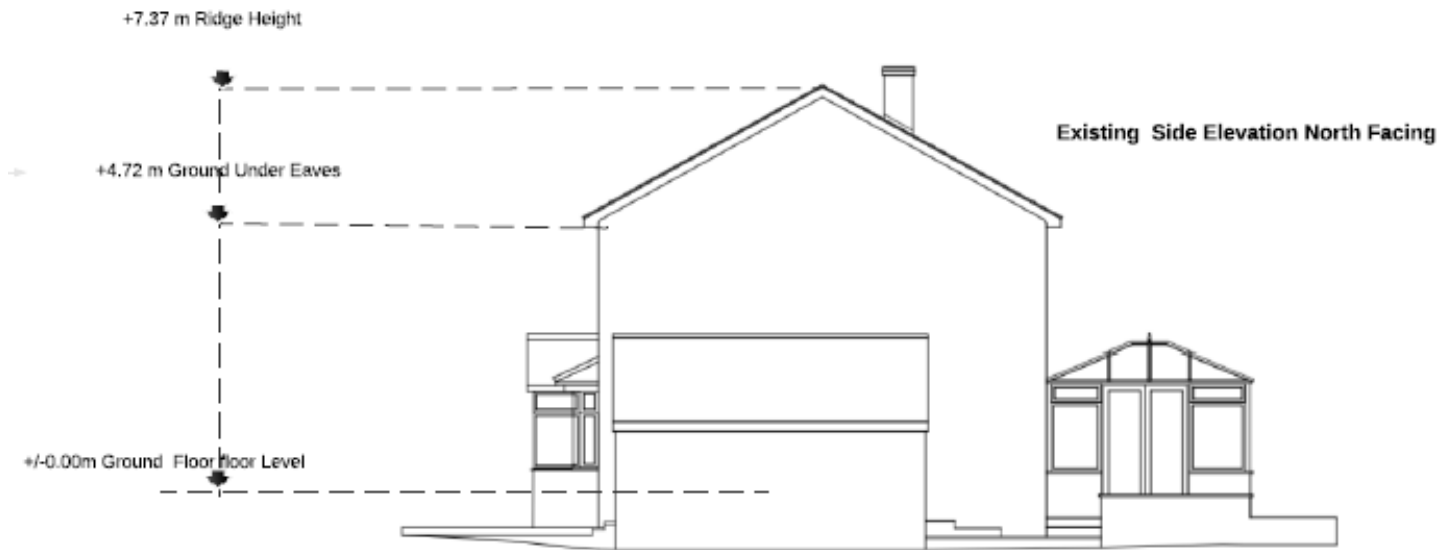


Proposed front elevation

Previous

Next

Home



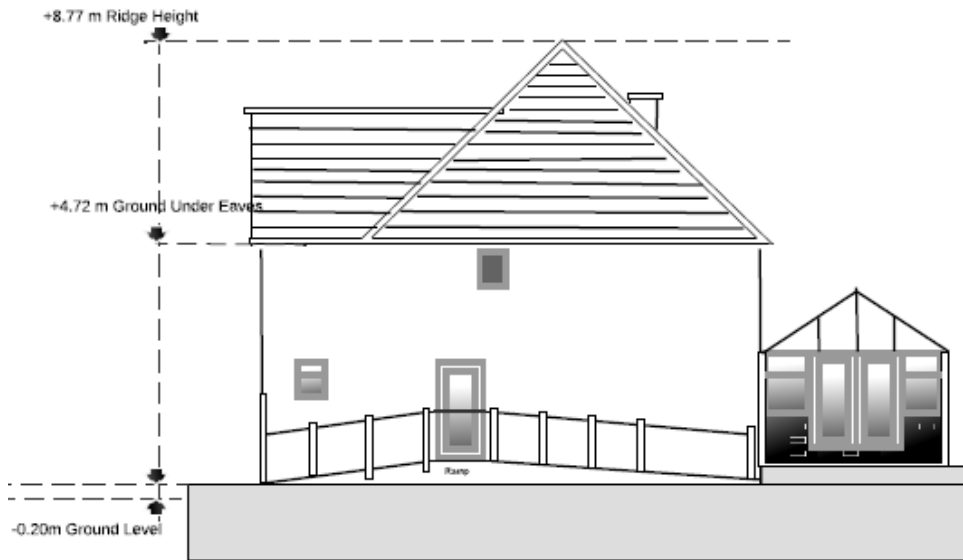
Existing side (north) elevation

[Previous](#)

[Next](#)

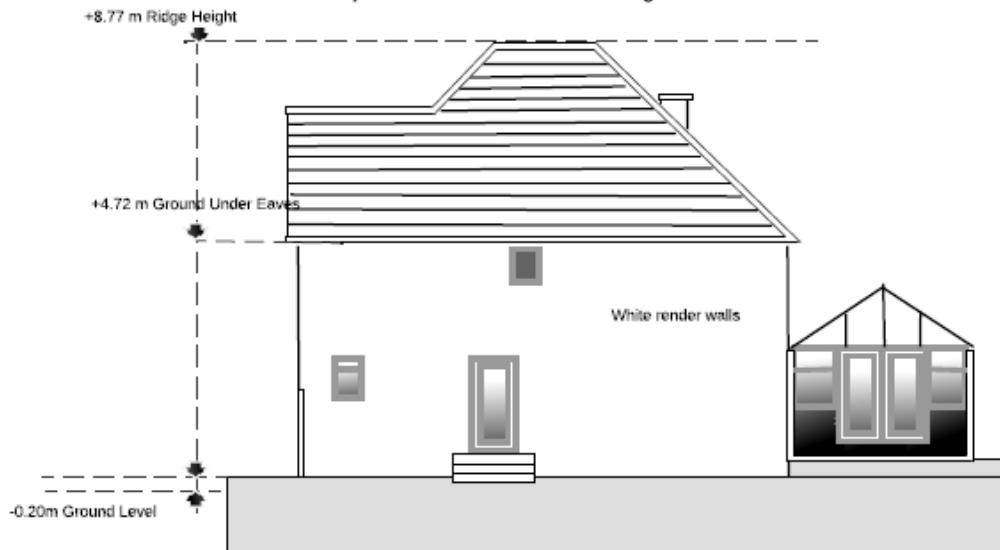
[Home](#)

Approved Side Elevation North Facing - Ref 19/P/01039



**Approved side (north) elevation
Ref: 19/P/01039**

Proposed Side Elevation North Facing

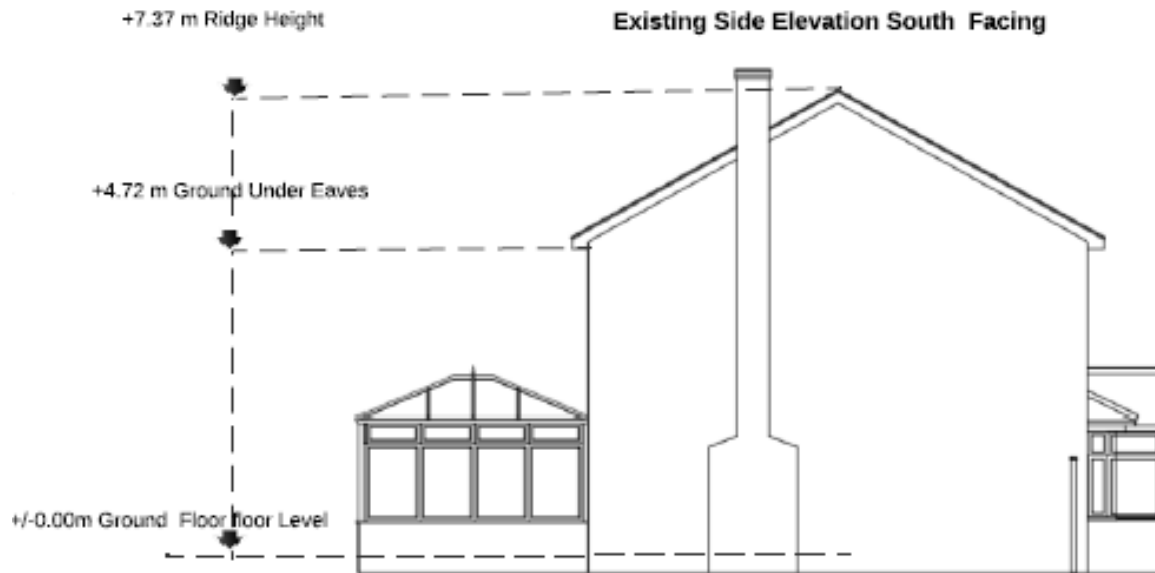


Proposed side (north) elevation

[Previous](#)

[Next](#)

[Home](#)



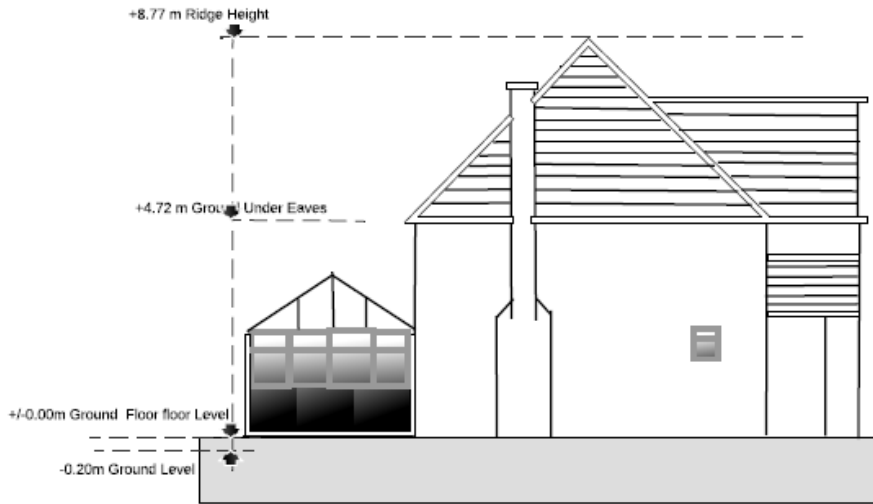
Existing side (south) elevation

[Previous](#)

[Next](#)

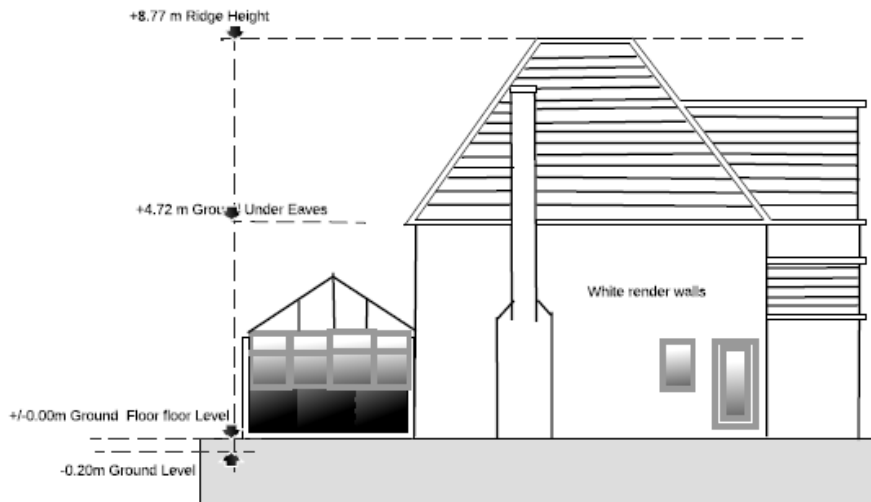
[Home](#)

Approved Side Elevation South Facing - Ref 19/P/01039



Approved side (south) elevation
Ref: 19/P/01039

Proposed Side Elevation South Facing



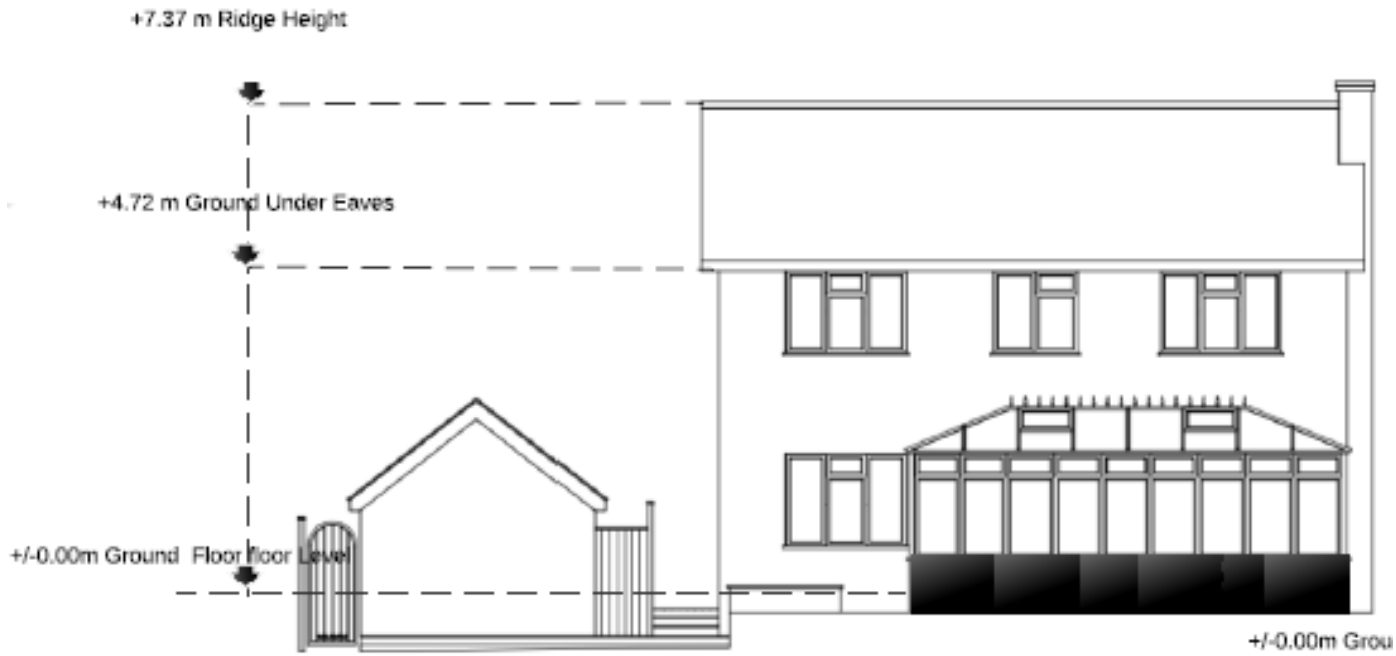
Proposed side (south) elevation

Previous

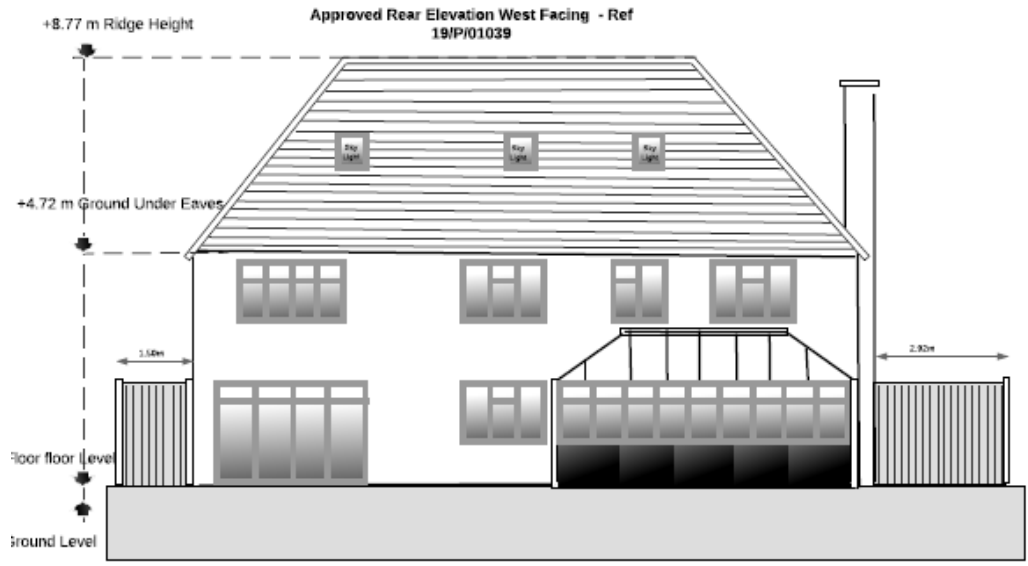
Next

Home

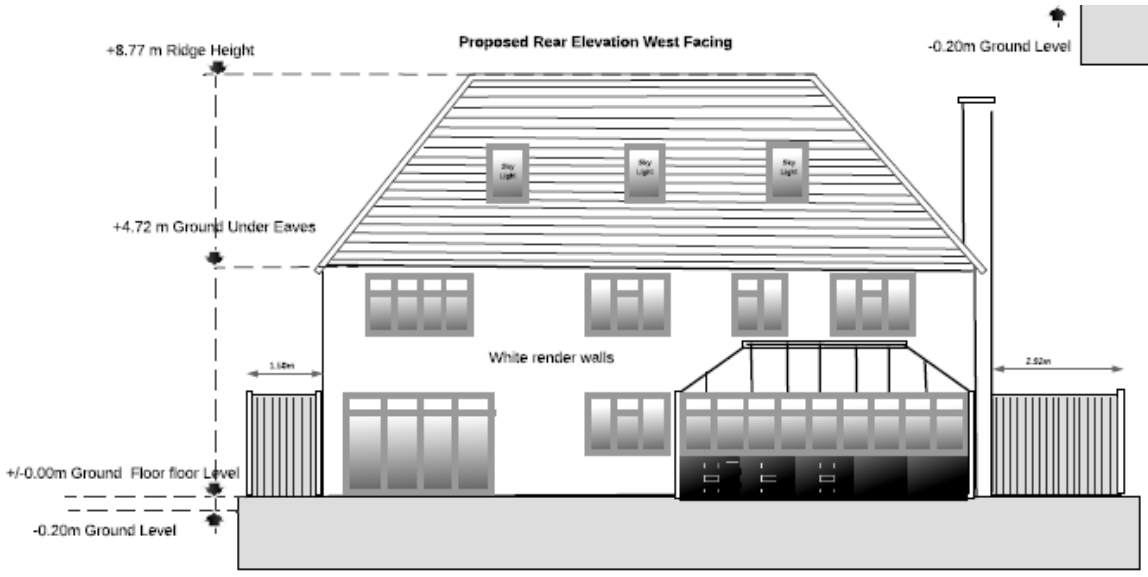
Existing Rear Elevation West Facing



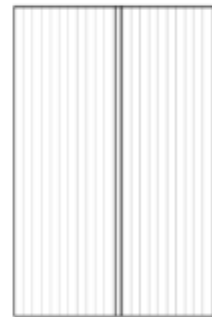
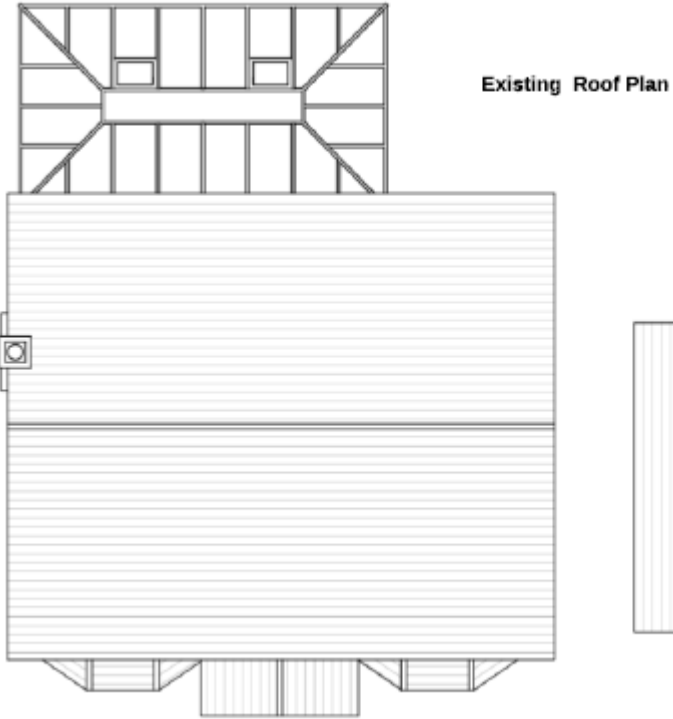
Existing rear elevation



**Approved rear elevation
Ref: 19/P/01039**



Proposed rear elevation

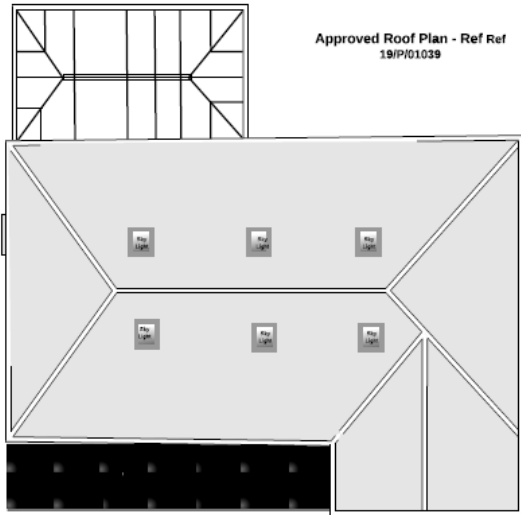


Existing roof plan

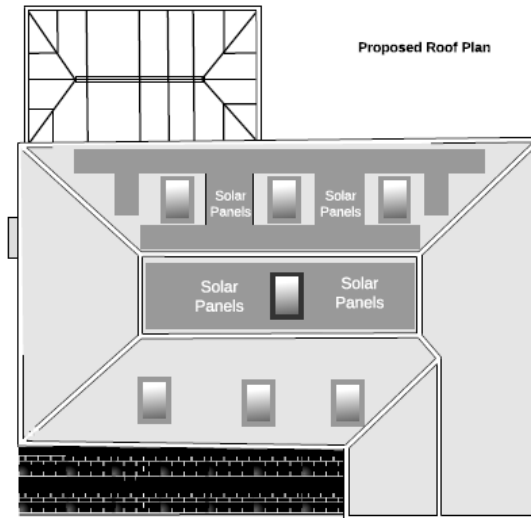
[Previous](#)

[Next](#)

[Home](#)



**Approved roof plan
Ref: 19/P/01039**

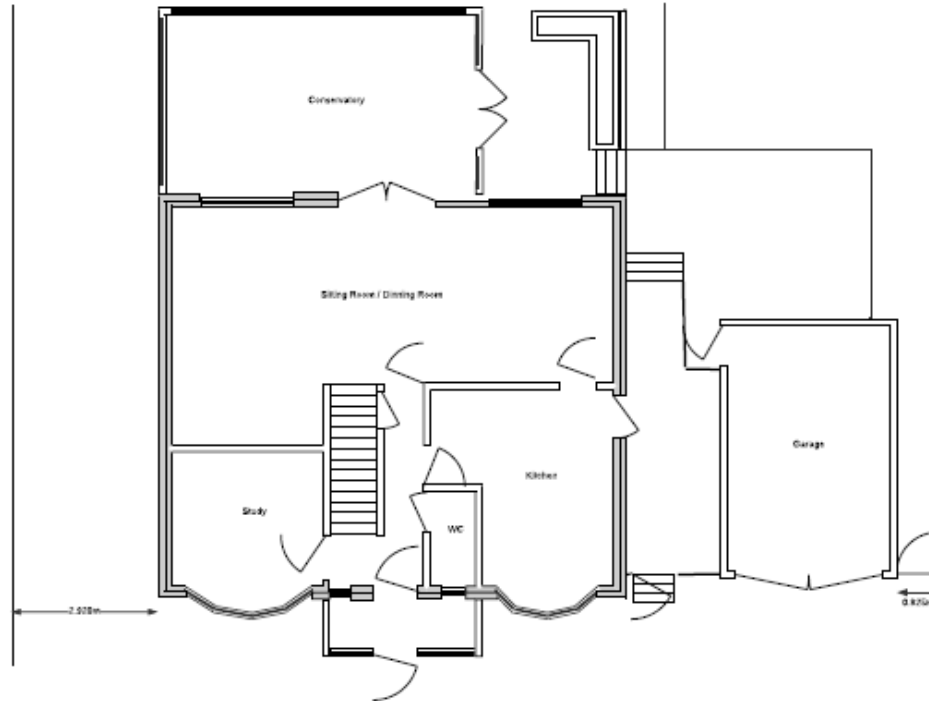


Proposed roof plan

[Previous](#)

[Next](#)

[Home](#)

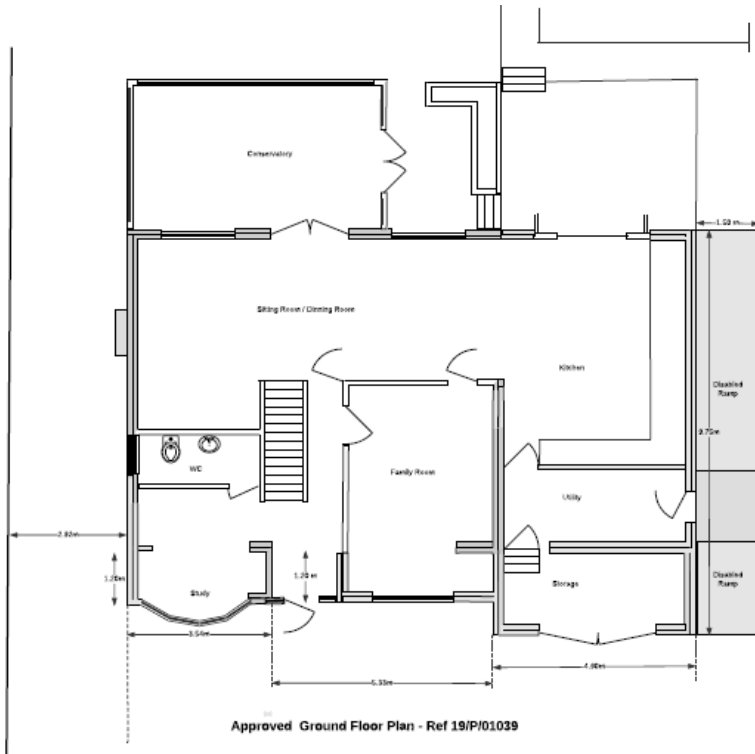


Existing ground floor plan

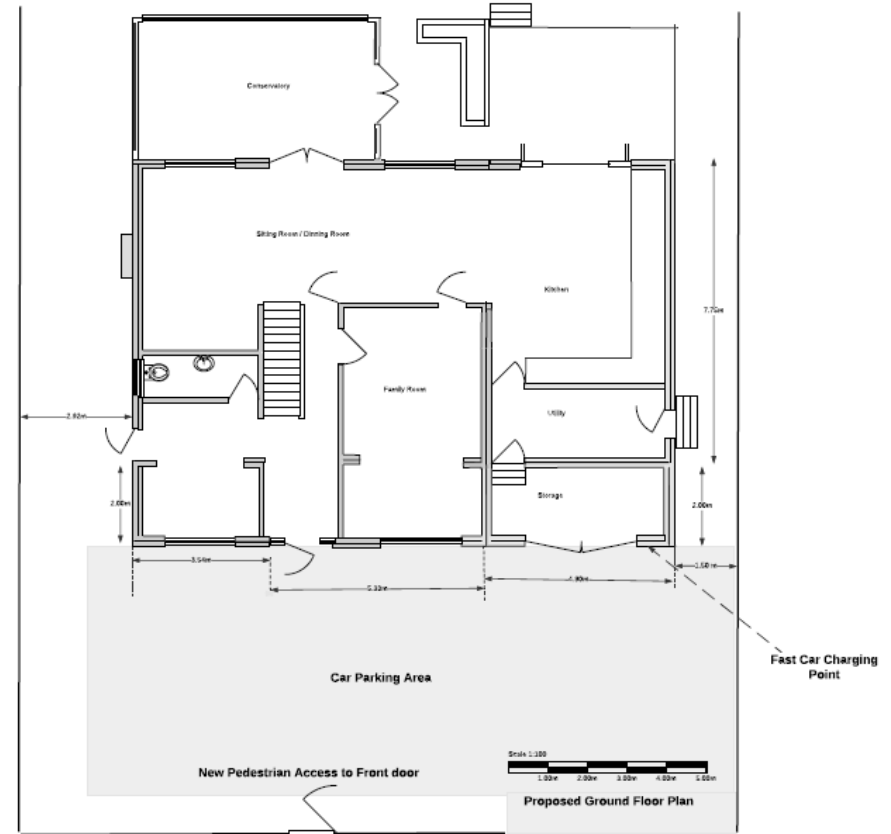
[Previous](#)

[Next](#)

[Home](#)



**Approved ground floor plan
Ref: 19/P/01039**



Proposed ground floor plan

[Previous](#)

[Next](#)

[Home](#)



[Previous](#)

[Next](#)

[Home](#)



[Previous](#)

[Next](#)

[Home](#)

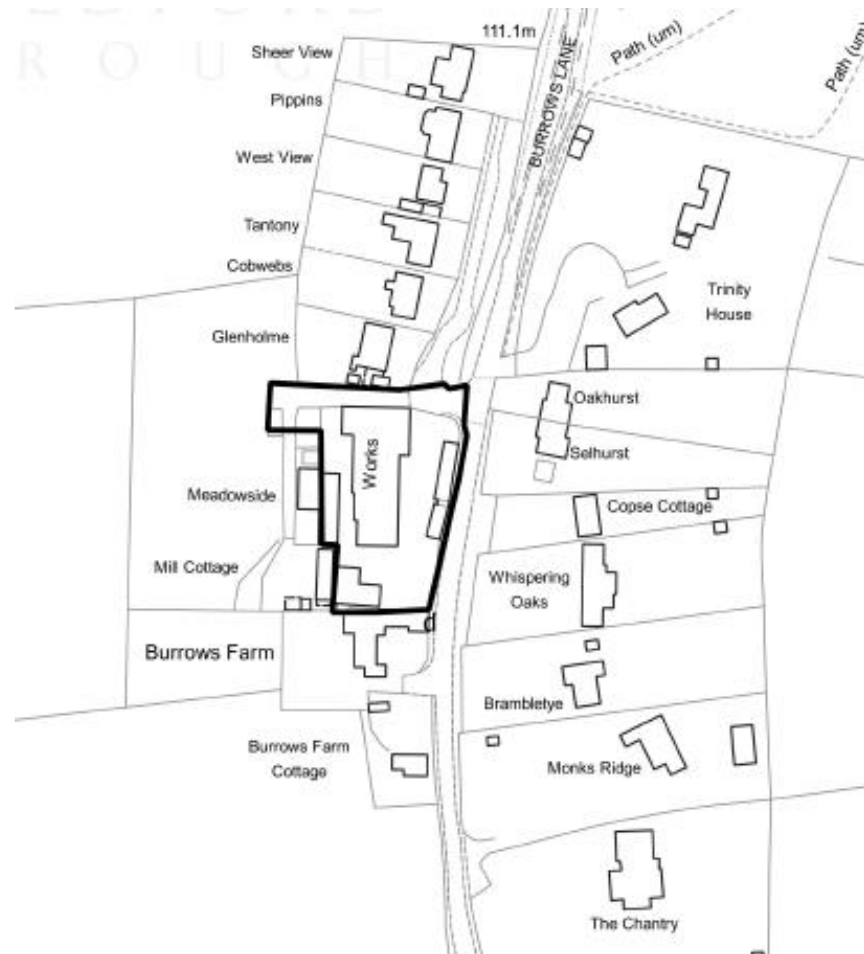
20/P/00757

**Unit 3A
Kings Yard
Burrows Lane
Shere
Guildford**

[Previous](#)

[Next](#)

[Home](#)





Block plan – As built

[Previous](#)

[Next](#)

[Home](#)



[Previous](#)

[Next](#)

[Home](#)